

EX 6" WATER

exit from garage

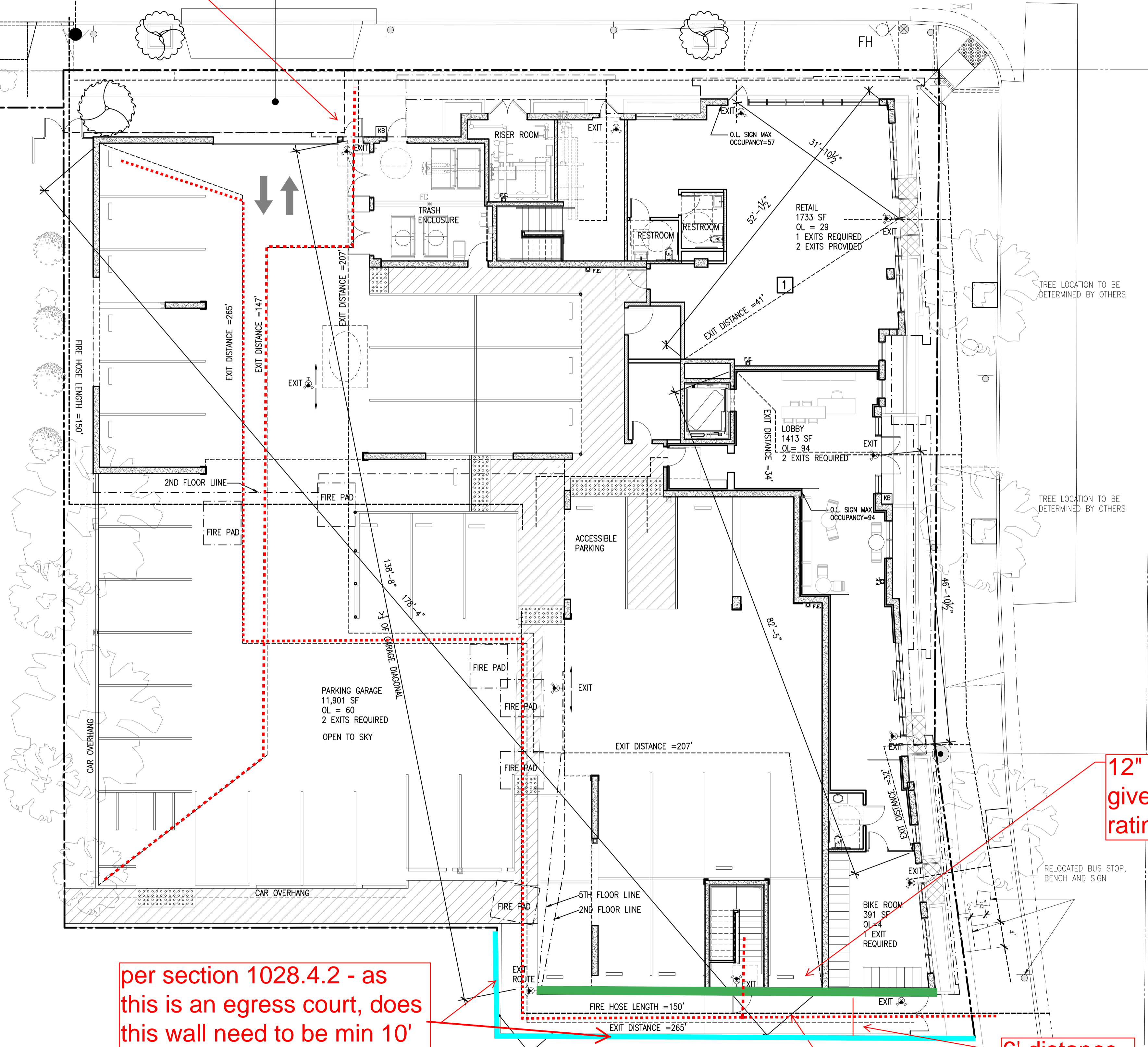
EX 8" SS

NOTE:

ALL EX LIGHTS WITH S

GENERAL

- 1 ON GR HARD I
- INDOOR
- PODIUM
- RETAIL
- BOTH T
- CEILING
- PODIUM



12" concrete wall gives us 3 hour rating

per section 1028.4.2 - as this is an egress court, does this wall need to be min 10' tall and 1 hour rated? as this is a property line wall

6' distance

exit from garage

8" THICK PROPERTY WALL 10' HEIGHT - ONE HOUR RATED

1 SITE PLAN EXIT DIAGRAM

SCAL